

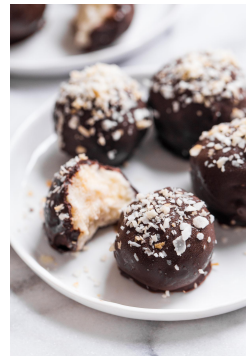
## MODEL 1001B MEATBALL FORMER MACHINE

Are you tired of using that ice cream scoop to make ball shaped products?

The 1001B meatball machine will solve these problems with the touch of a button. Our machine takes any prepared recipe and portions, packs and rolls it into a perfect ball with just the right amount of firmness (as if they were hand made). Perfectly suitable for making meatballs, motzoh balls, fish balls, cookie balls, cheese balls and various other spherical products!

### FEATURES:

- \* Interchangeable dice without the use of tools
- \* Chain driven with permanently sealed and lubricated ball bearings
- \* All food contact parts readily removable for easy clean up
- \* USDA approved models available
- \* All washable components are dishwasher safe
- \* Standard dies:  $\frac{7}{8}$ " (~1/2 oz.)  
 $1\frac{3}{8}$ " (~1.0 oz.)  
 $1\frac{3}{4}$ " (~2.0 oz.)



SPECIFICATIONS	MODEL 1001B
Hopper capacity	30 lbs.
Production capacity	300 lbs. per hour (5000 1oz. balls per hour)
Motors (2)	1/4 HP, 4.5 Amps - 1/8 HP, 1.5 Amps
Total weigh	150 lbs.
Electrical specs	110 Volts, 60 Cycles
Dimensions	14" width x 25" length x 36" high

